

Exactive and nanoAcquity Software installation

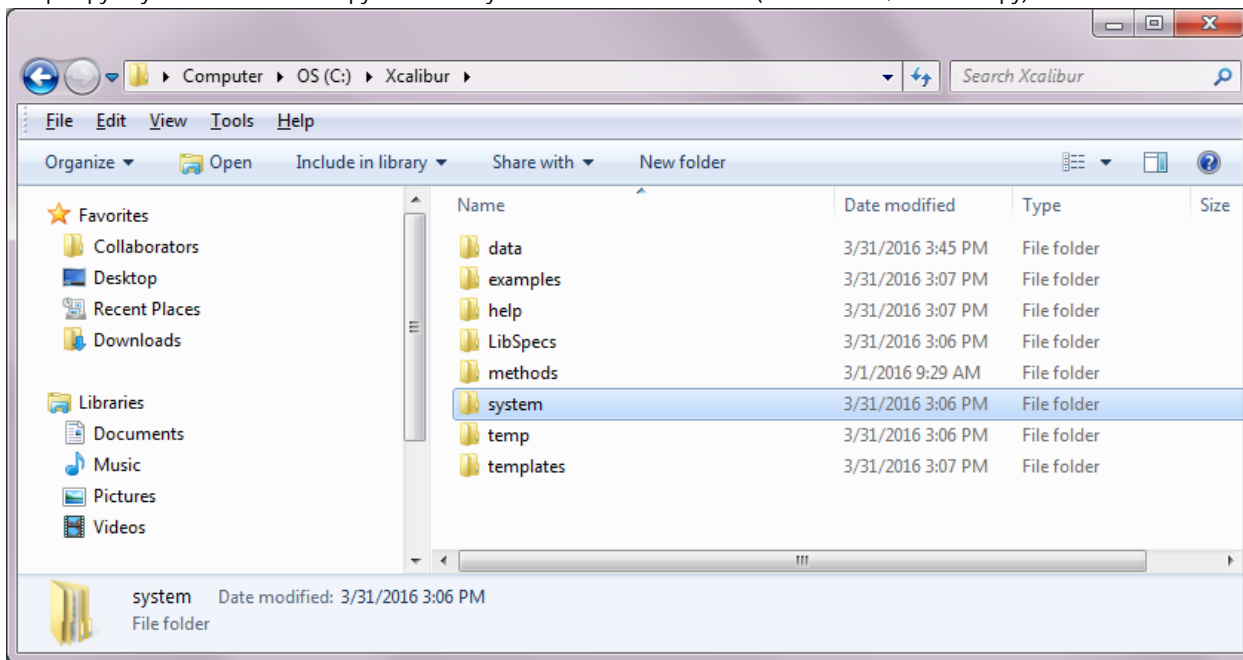
Contents

Exactive and nanoAcquity Software installation	1
Installing Exactive Series 2.7	2
Platform (Foundation3.1 SP2)	3
Xcalibur 4.0	4
Instrument Driver (Exactive Series 2.7)	4
Thermo LC Devices	5
nanoAcquity SW installation	5
nanoAcquity SW installation (short)	6
NanoAcquity Reboot	6
nanoAcquity Detailed Install/Connection Procedure for newer Xcalibur Versions	7

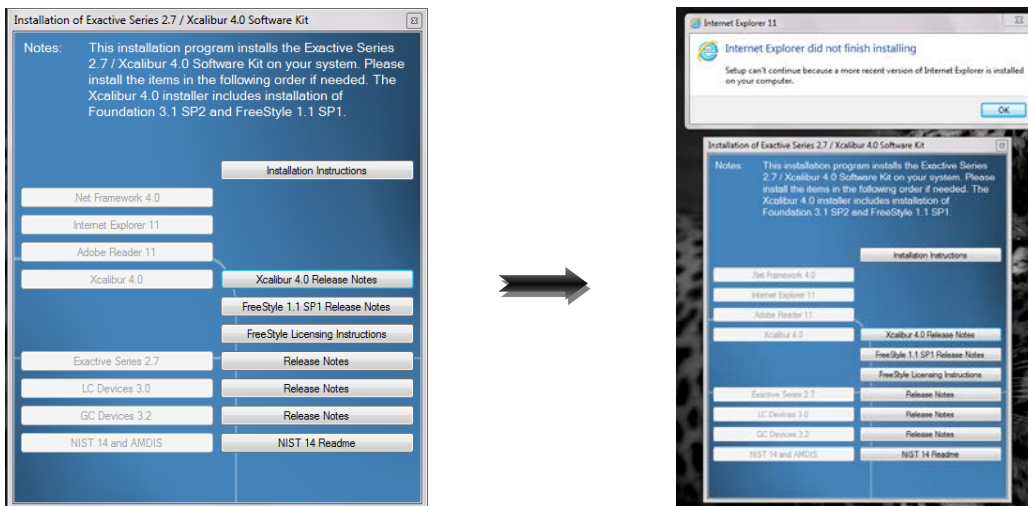
Installing Exactive Series 2.7

Read the install Instructions provided by Thermo!

Make a backup copy of your cali files. Just copy the entire system file to a new location (don't move it, make a copy).



When you insert the DVD and let it auto run, you should get a window looking similar to the one below, read the installation Instructions. Internet Explorer 11 is most likely black, as they want you to install that first, all the others are grayed out. But when you try to install Internet Explorer 11 you get an Error and it won't let you proceed to install anything else.

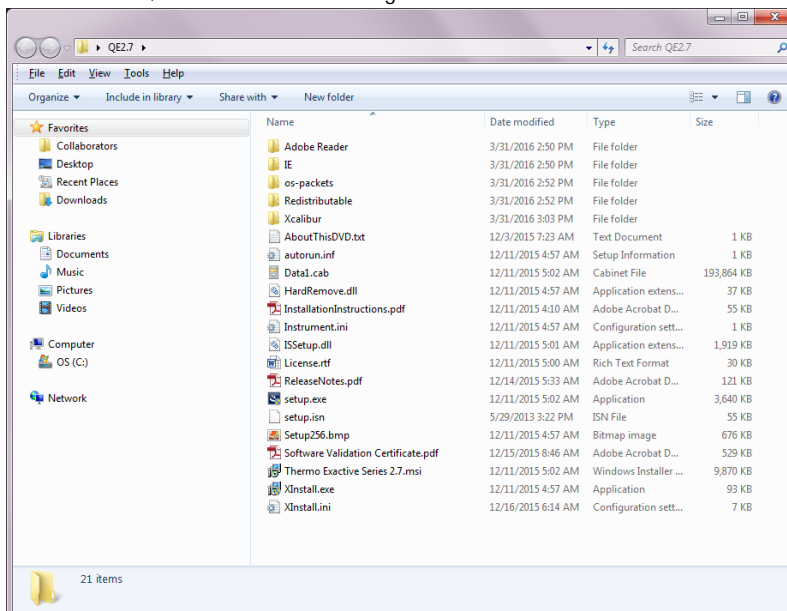


So you have to manually install the different Thermo SW, in the following order:

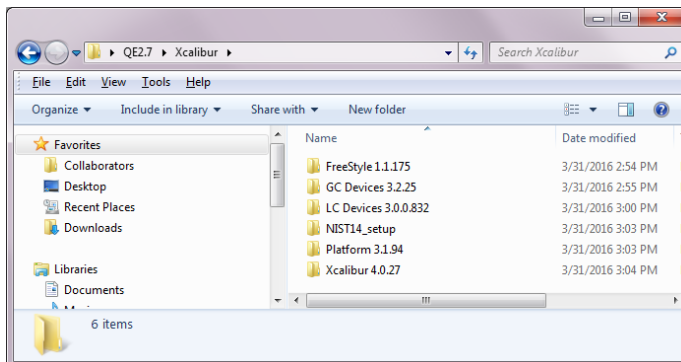
1. Platform (which is Foundation)
2. Xcalibur
3. Instrument driver, i.e. Exactive Series 2.7
4. LC Devices

Platform (Foundation3.1 SP2)

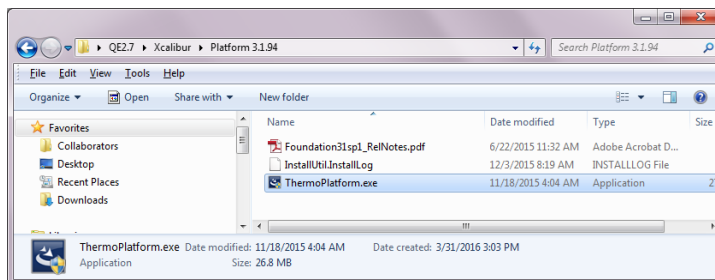
1. Insert the DVD and select browse files, it should look something like this:



2. Double click on the Xcalibur folder:



3. Double click on the Platform 3.1.94 folder:

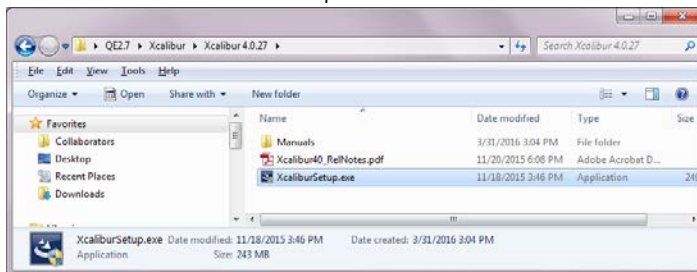


4. Double click on the ThermoPlatform.exe

This will start the install of Foundation, at the end it will prompt you to reboot your PC.

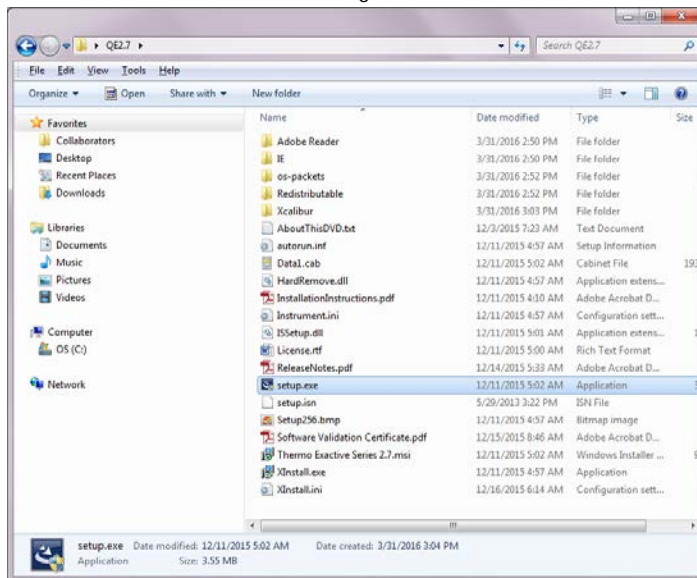
Xcalibur 4.0

- In the Xcalibur 4.0.27 folder, double click on the XcaliburSetup.exe to start the install, this will install Xcalibur 4.0 and Freestyle 1.1



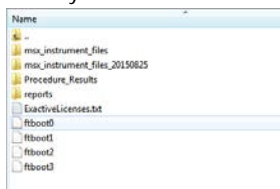
Instrument Driver (Exactive Series 2.7)

- To install the Instrument Driver, in this case Exactive Series 2.7, go back to the main window and double click on setup:

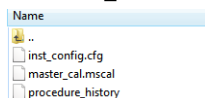


- Now you want to check and make sure you have all the correct license files and calibration files, compare the current files on your PC to the ones in the system backup, they should be the same (compare date/time stamp).

Go to Xcalibur/System/Exactive/Instrument/

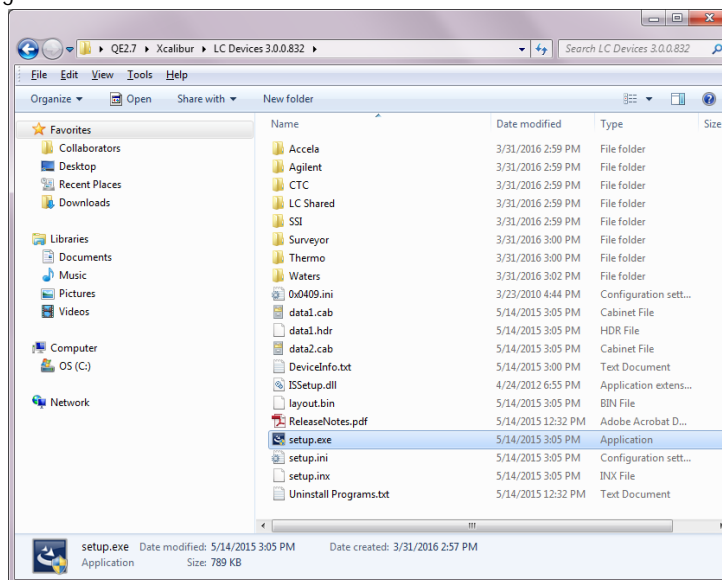


Double click on msx_instrument_files:



Thermo LC Devices

- To install the LC Devices, go back to the Xcalibur folder and double click on the LC Devices folder and then run the setup.exe:

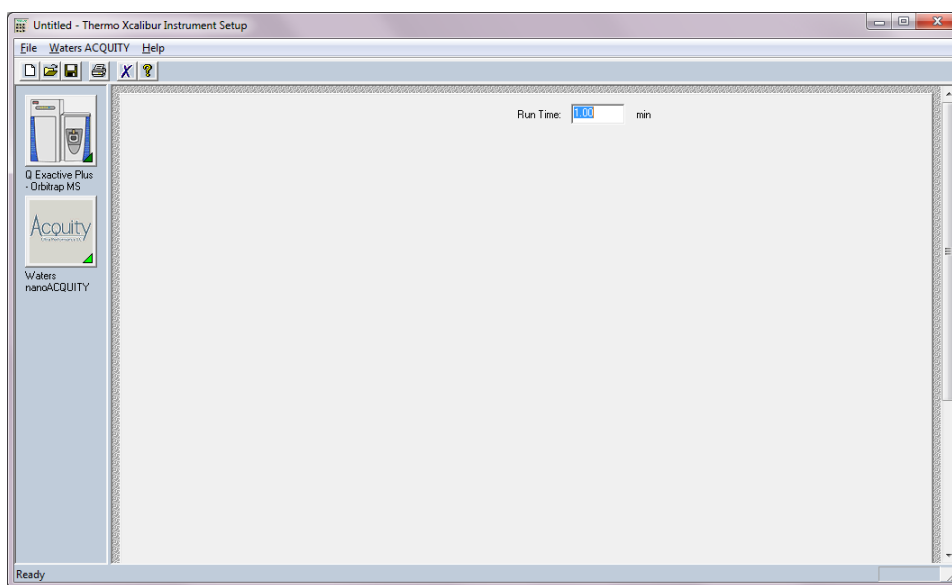


Select the appropriate LC for your setup.

nanoAcquity SW installation

We have a nanoAcquity hooked up to our QEplus. Unfortunately the nanoAcquity software installation is very difficult with the newer versions of Xcalibur on our 64 bit win7pro PC's. So far we've seen two different issues after the SW installation:

- When opening the Instrument Configuration the nanoAcquity does not show up as a configurable instrument
- It does show up and you can add it Instrument Configuration, but when you open the method editor (double click on Instrument setup in Xcalibur) the nanoAcquity instrument setup is blank and will only show the run time:



nanoAcquity SW installation (short)

Here is a procedure that seems to work, most of the time (scroll down for a more extensive version with screen shots):

1. Uninstall the three Thermo LC Devices
2. Install the Thermo LC Devices Acquity (not nanoAcquity)
3. Uninstall the Acquity Binary Solvent Manager (none of the other Acquity modules)
4. Uninstall the three Thermo LC Devices (you may need to reboot the PC)
5. Uninstall the Acquity Auxiliary Pump
6. Uninstall the nanoAcquity Binary Solvent Manager
7. Uninstall the nanoAcquity Sample Manager
8. Reboot PC
9. Install LC Devices nanoAcquity
10. Reboot PC and cycle Power on the nanoAcquity

Open the Waters Console and check that the correct Modules are configured, i.e. nanoAcquity Sample Manager and nanoAcquity Binary Solvent Manager. Now check if you see the nanoAcquity in Instrument Configuration and/or in the method editor.

If so you are good to go.

NanoAcquity Reboot

Note if for some reason the nanoAcquity errors out (e.g. system overpressure, or missing vial etc.) you have to follow the following reboot sequence to recover:

1. Open Instrument Configuration, remove the nanoAcquity and hit Done
2. Reboot PC and log in
3. Cycle Power on the nanoAcquity, wait for it to completely start up
4. Open Instrument Configuration, add the nanoAcquity and hit Done

The two main issues after an error are:

1. The nanoAcquity will not do trapping at all; it will inject the sample and then immediately start the acquisition.
2. Or it will trap using the last trapping method used before it had the error, i.e. if you use a method with a different trapping time it will not use the new trapping time but continue to use the previous time.

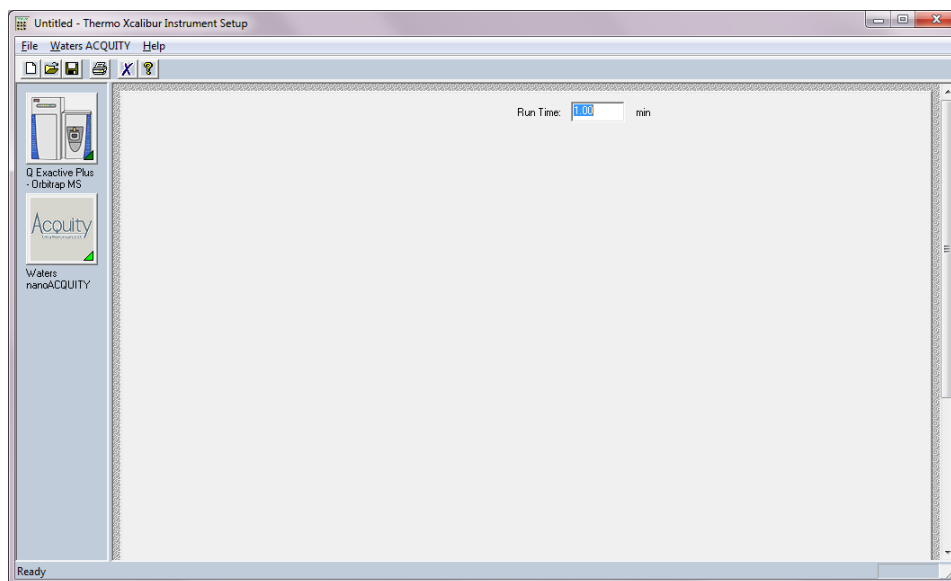
If you notice either one of those, follow the reboot sequence above.

Note I have two methods, very short 1 min acquisitions one with a 30 sec trapping and one with a 1 min trapping. I run those to check if the nano is performing as it should. Alternatively, inject a QC.

nanoAcquity Detailed Install/Connection Procedure for newer Xcalibur Versions

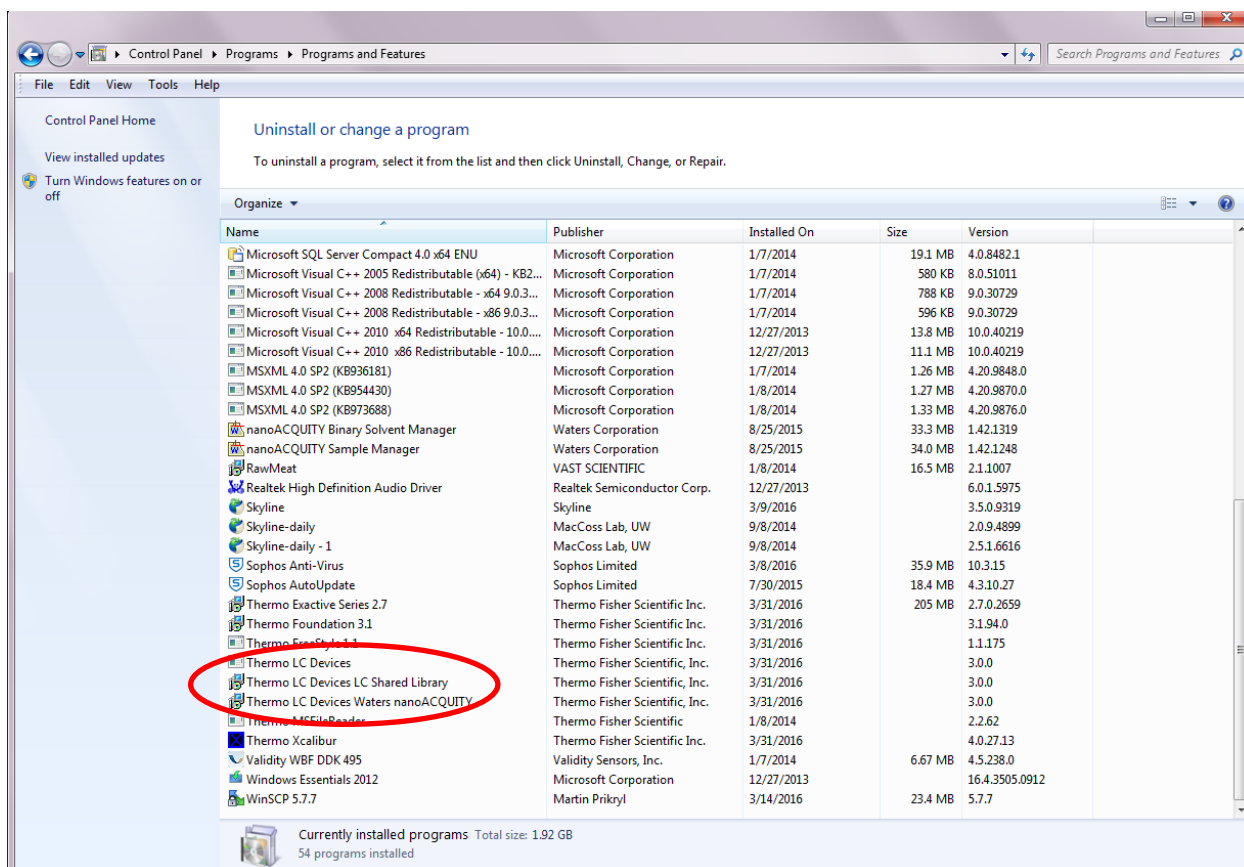
Issue: After Thermo LC Devices nanoAcquity Software Installation:

1. When opening the Instrument Configuration the nanoAcquity does not show up as a configurable instrument
2. If it does show up and you can add it, then when you open the method editor (double click on Instrument setup in Xcalibur) the nanoAcquity instrument setup is blank and will only show the run time:

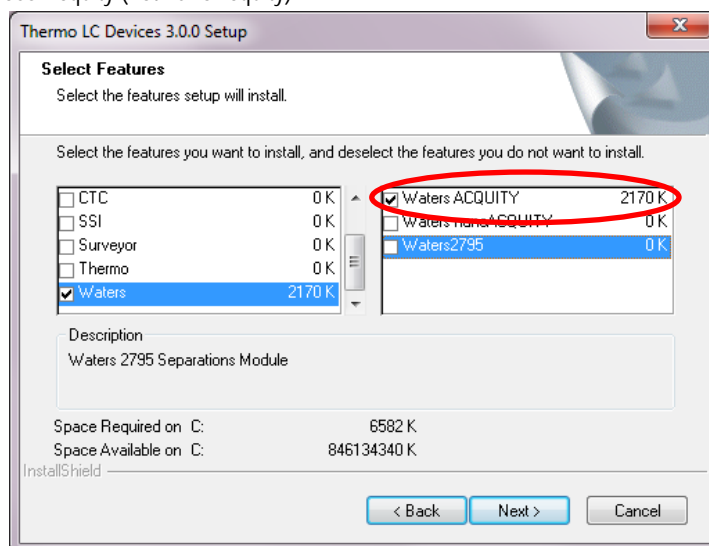


If you see something like that try the following procedure:

1. Uninstall (in this order):
 - 1.1. Thermo LC Devices Waters nanoAcquity
 - 1.2. Thermo LC Devices LC Shared Library
 - 1.3. Thermo LC Devices



2. Next Install the Thermo LC Devices Acquity (not nanoAcquity):

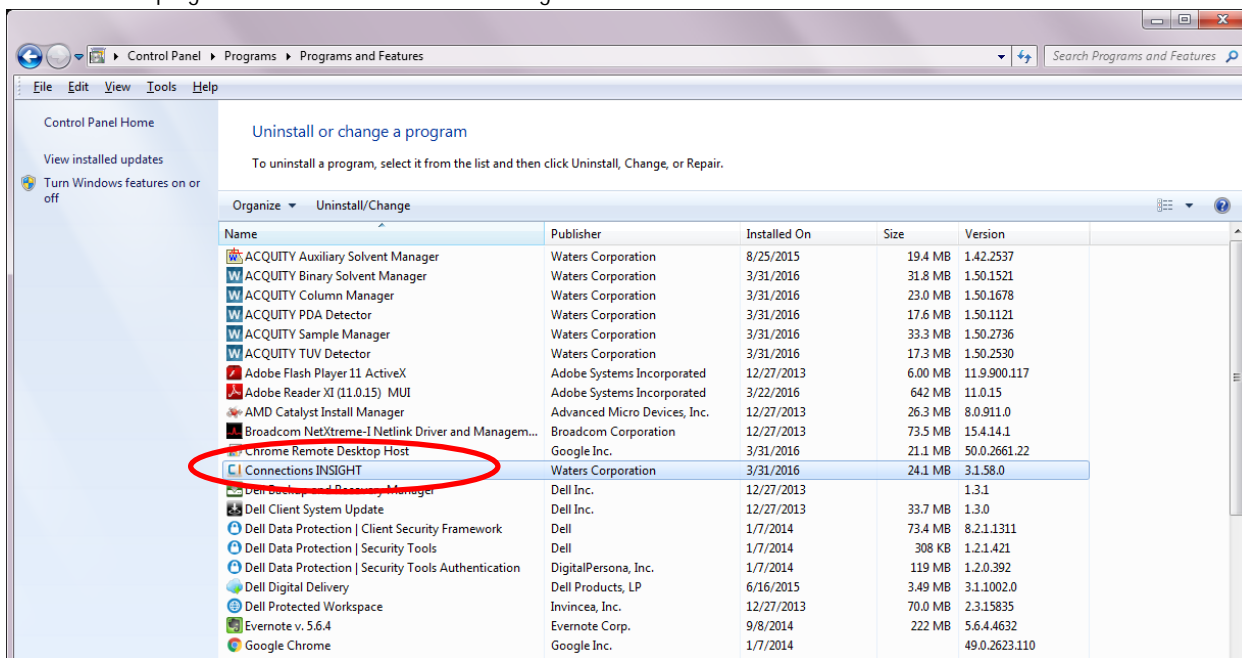


3. Reboot PC

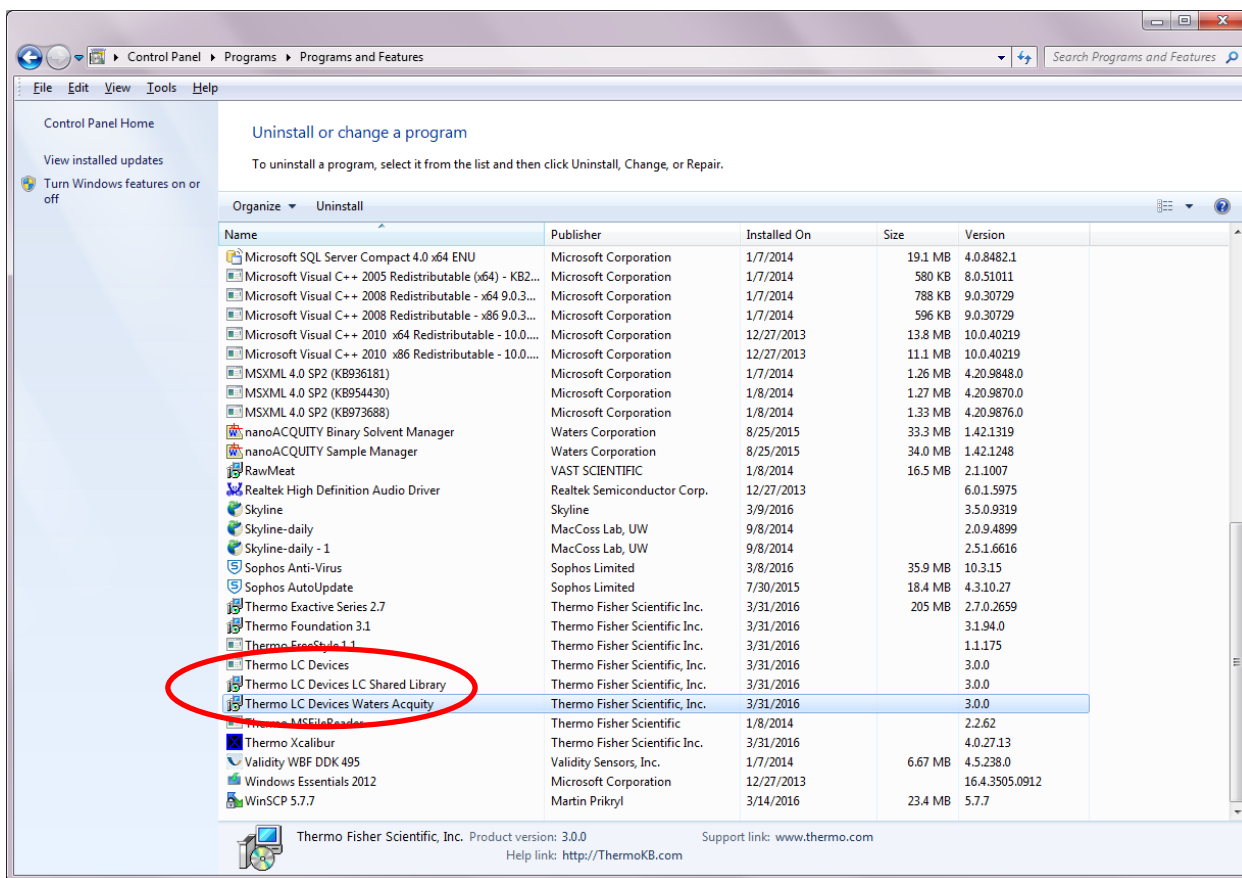
You will get a popup, Connections Insight, just hit cancel



4. Go back to uninstall programs and uninstall connections insight:

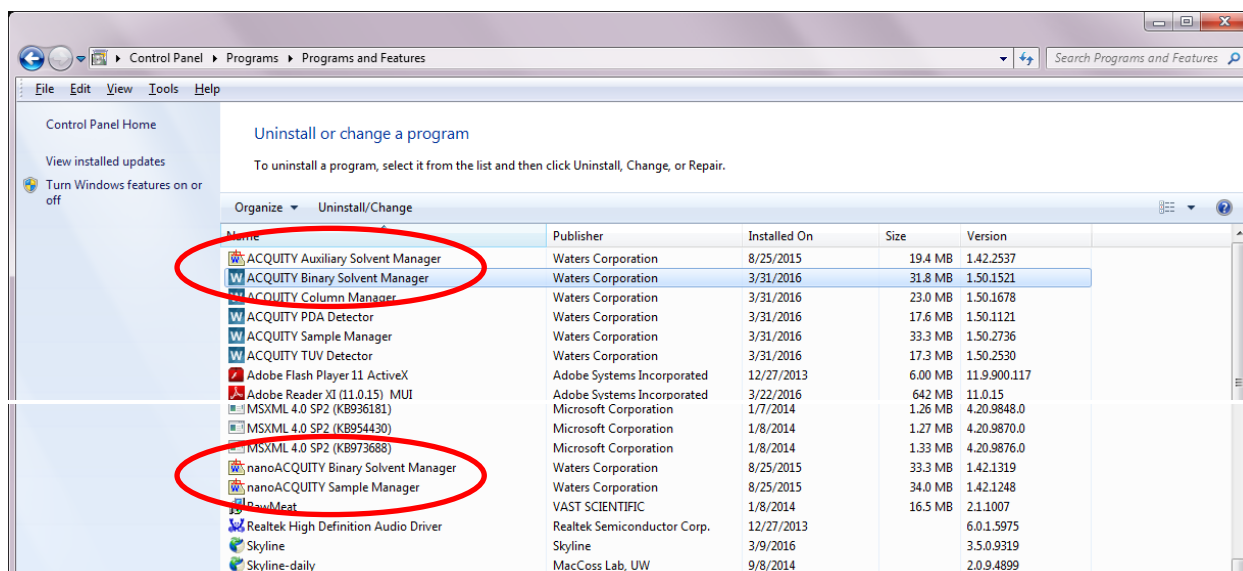


5. Uninstall (in the order listed):
 - 5.1. Thermo LC Devices Waters Acquity
 - 5.2. Thermo LC Devices LC Shared Library
 - 5.3. Thermo LC Devices
 - 5.4. You may have to reboot the PC

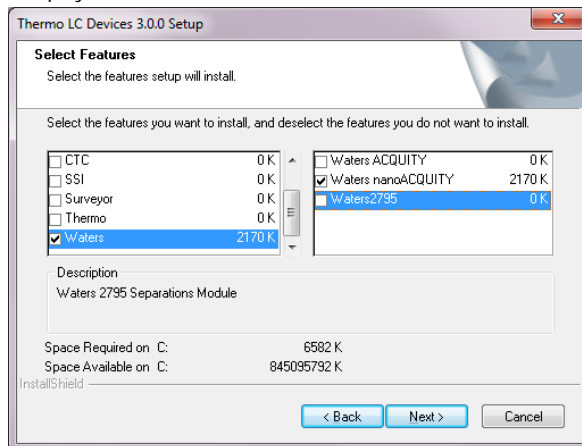


6. Uninstall:
 - 6.1. Acquity Binary solvent manager
 - 6.2. Acquity Auxiliary solvent manager
 - 6.3. nanoAcquity Binary solvent manager
 - 6.4. nanoAcquity Sample manager

7. Reboot PC

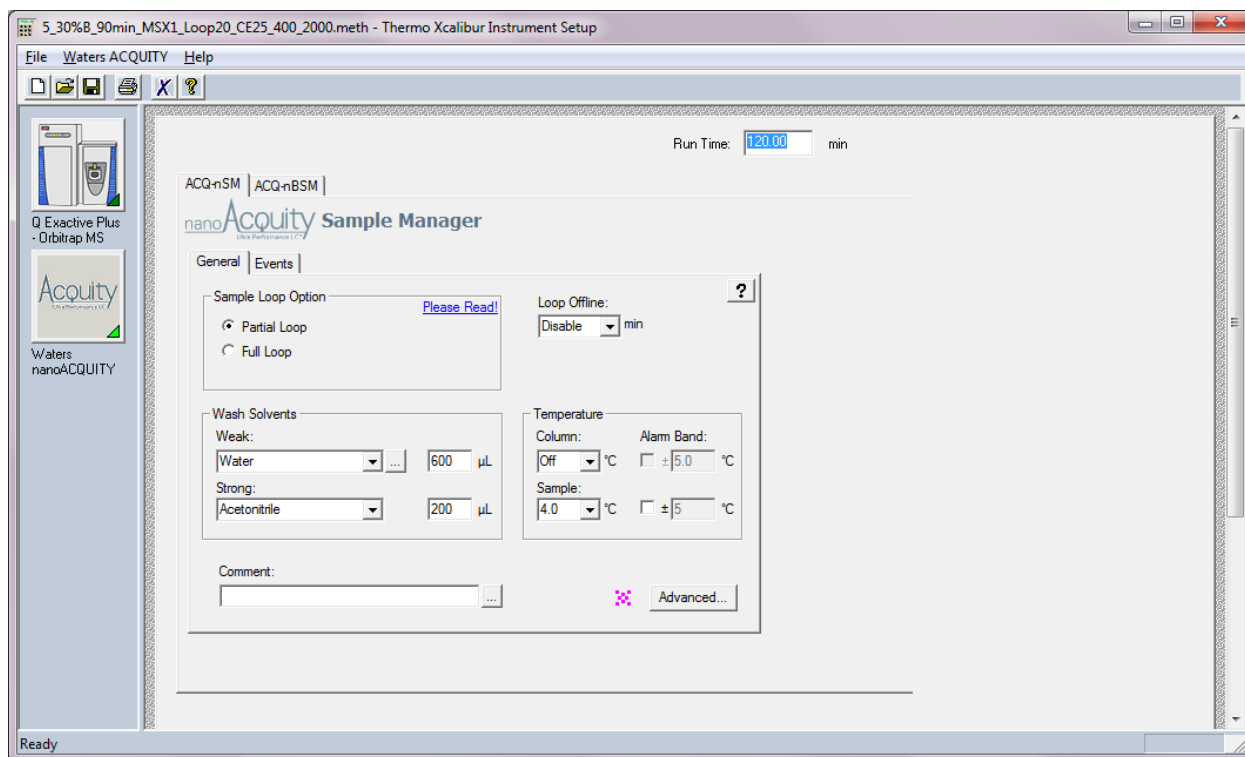


8. Install Thermo LC Devices Waters nanoAcquity:

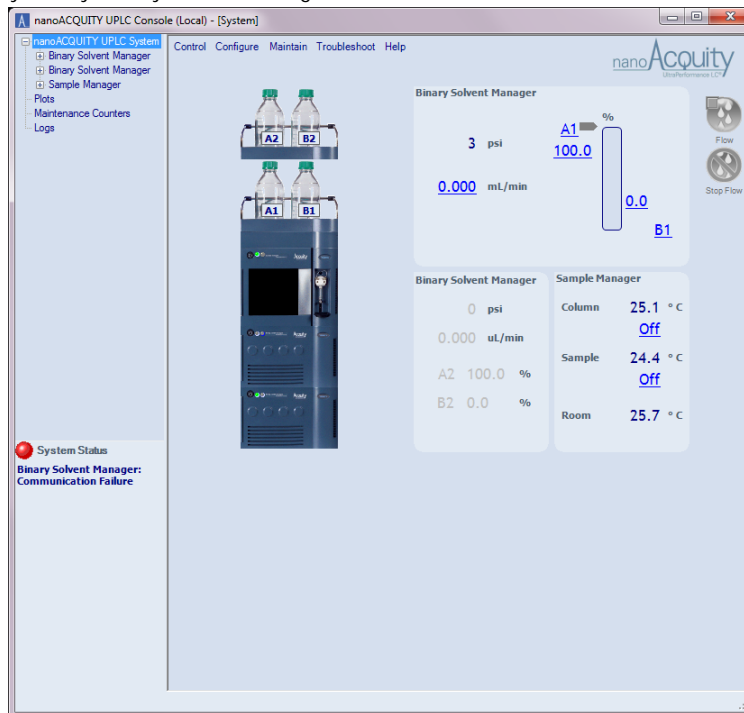


9. Reboot PC
10. Cycle power on nanoAcquity
11. Open Instrument configuration, add nanoAcquity and hit Done (wait a minute)
12. Open Xcalibur
13. Open Instrument Setup

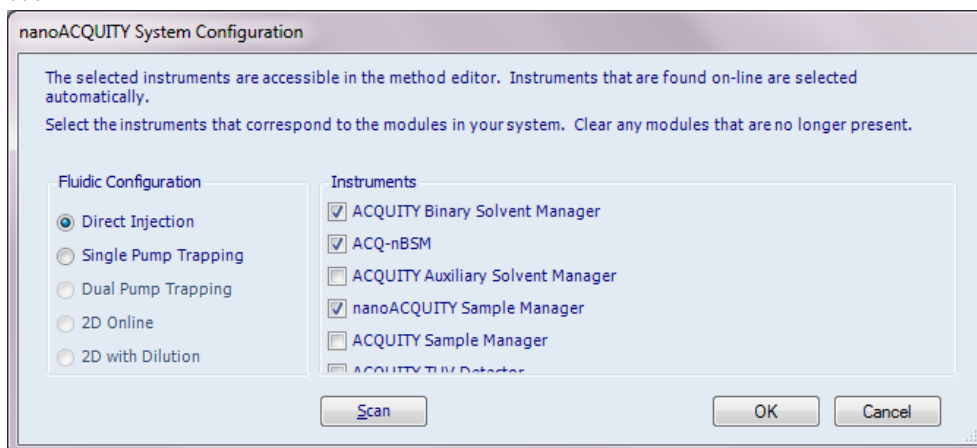
It should look like this:



Note if you don't uninstall the Acquity BSM you may see something like this:



And in System Configuration:



When you hit Scan, it removes the ACQ-nBSM and only left the Acquity Binary Solvent Manager

To resolve this I had to uninstall the three LC Devices, the Acquity Binary and Auxiliary Solvent Manager, and the nanoAcquity Sample Manger and Binary Solvent Manager and then reinstall the LD Devices nanoAcquity, as described above.