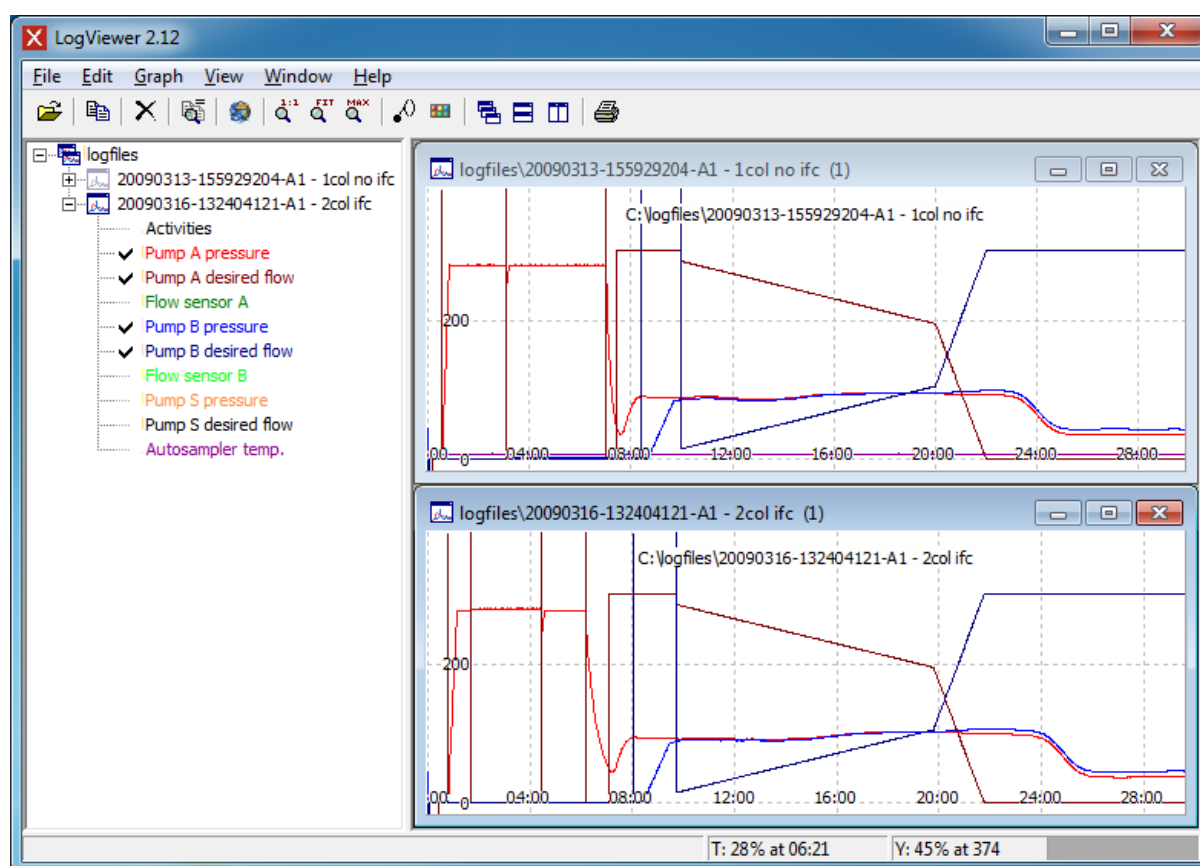


LogViewer 2

User manual

2012-06-08



How to use the LogViewer2 software including shortcuts and mouse buttons.

Table of Contents

1 Introduction 3

2 Opening log files 4

3 Showing log file graphs in a window 5

4 Examine graphs in a window 6

5 Working with more graph windows 7

6 Comparing Graphs 8

7 The Activities Graph 9

8 Showing the Command Log 10

9 Showing the Method Parameters 11

10 Showing the Device configuration 12

11 Changing line colors 13

12 Select graphs to view 14

1 Introduction

LogViewer 2 is a software application for Windows XP and later. Its purpose is to view data log files produced by the Proxeon Easy-nLC. It can open, view and compare several log files at the same time and also open zip files containing log files.

There is no installer – simply unzip all the files from the downloaded archive into a suitable directory and run the LogViewer2.exe application (by double-clicking the file or icon).

While only the LogViewer2.exe is needed for the application to run there still are a few files that can help when style sheet files are not in the result folders.

If the file 'easynl-batch.xml' cannot be in the result folder then LogViewer2 will look in its application folder.

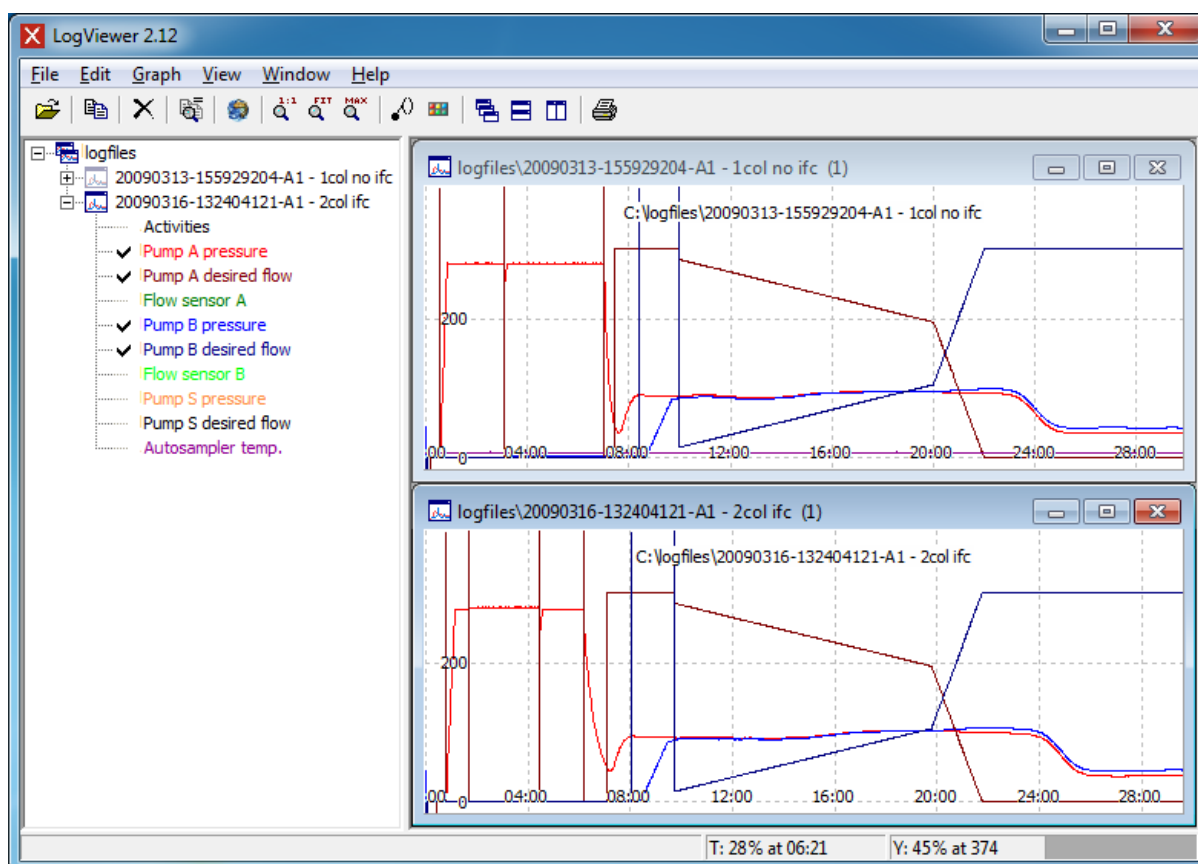
If the file 'easynl-configdump.xml' cannot be in the result folder then LogViewer2 will look in its application folder.

So it is a good idea to put the files 'easynl-batch.xml' and 'easynl-configdump.xml' in the same location as the LogViewer2.exe.

The documentation files could also be put in this folder.

2 Opening log files

To open a log file use 'File->Open' menu item or pick one from the most recent used list also from the File menu.



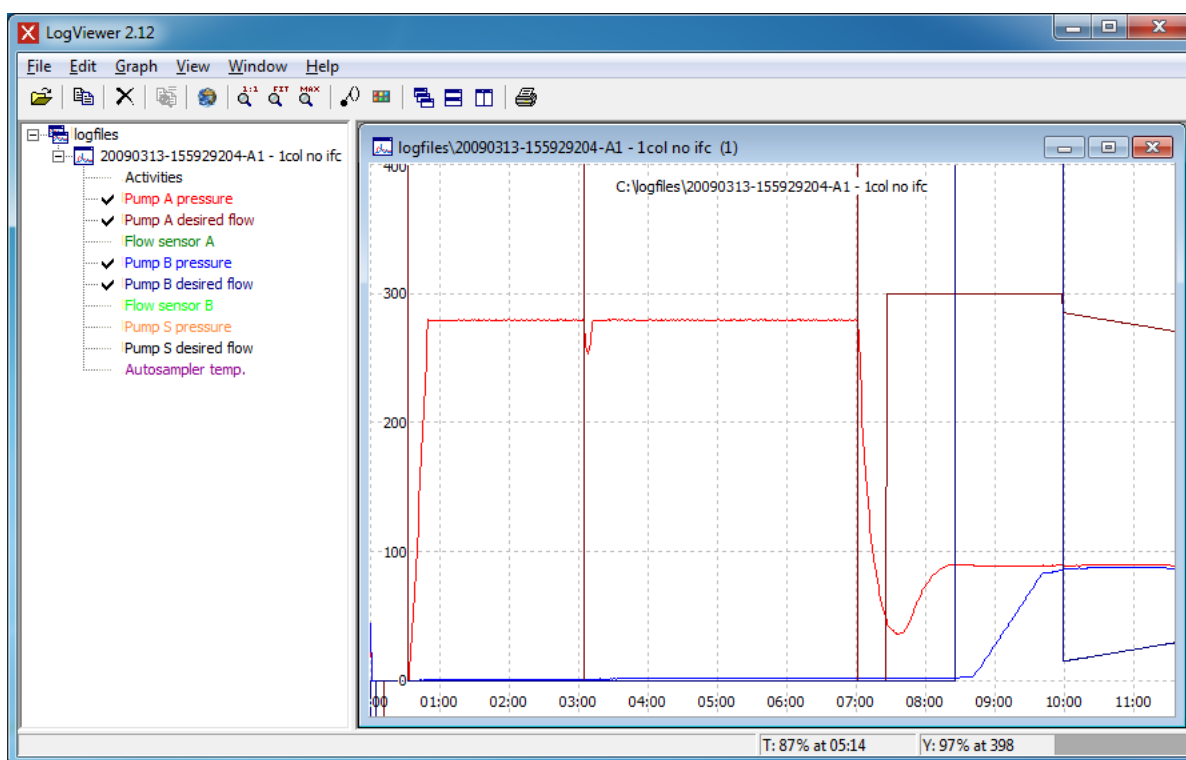
If 'File->Open' is used then pick a .txt file like Pump A.txt or any other file in the log folder. If the file is a zip file then the file will be unzipped into a temp folder and the log tree will show all the log files found in the zip file.

Open log files are shown in the log tree panel to the left of the window.

A log file can be opened directly on the HPLC if it is connected to a network. Select 'File->Open'. In the input field called 'File name:' type the IP-number or name of the HPLC like: \\172.22.50.100\ then logon to the HPLC using an HPLC account and password. Then browse to the log files in the batchLog folder.

3 Showing log file graphs in a window

Select a log file by navigating the log tree and click the node with the log file name. Then the log file will be opened and its graphs will be shown in a child window on the right.



Note that if only one log file is opened then it will be shown automatically.

4 Examine graphs in a window

When a window opens 4 graphs are shown by default. 'Pump A pressure', 'Pump A desired flow', 'Pump B pressure' and 'Pump B desired flow'.

Expand the log tree node (click +) to view the possible graphs to show in the window.

To show the other graphs click the graph name in the tree view and a checkmark (✓) is shown next to the graph name. If right mouse button is used then only that graph will be selected and all the other will be unselected.

Click and hold right mouse button on the graphs to move the axes to view other parts of the graphs.

Note that arrow keys are not supported! And note the status bar at bottom right corner of the main window. It shows the coordinates for the mouse cursor and zoom level of the view. Click them to change zoom level for X or the Y axis (not supported in compare window).

The X axis is the time in hour:minutes:seconds. And the Y axis is the flow rate [nl/min], pressure [bar] or the temperature [°Celsius].

To Zoom either left-click and drag the mouse to select a zoom area or use the mouse-wheel to zoom in or out. If ctrl+left-click is used then the axes are stretched from the bottom left corner to the mouse cursor. Hold down 'Alt' key to only zoom the Time axis. Hold down 'Ctrl' key to only zoom on the Y axis.

Left-double-click the graphs (Menu item 'Graph->Scale to Fit Window' or Ctrl-F) to set the zoom to fit window with Y axis of -10 to 350 or -10 to 1000 if log file is from a 1000 bar system.

Right-double-click the graphs (Menu item 'Graph->Scale 1 to 1' or Ctrl-T) to reset the zoom to 100% and move the graph to zero offset.

Menu item 'Graph->Scale To Max' (Ctrl-M): Sets the zoom levels and offset so all the graphs can fit into the Window. But Y axis will be set to -10 to 25000.

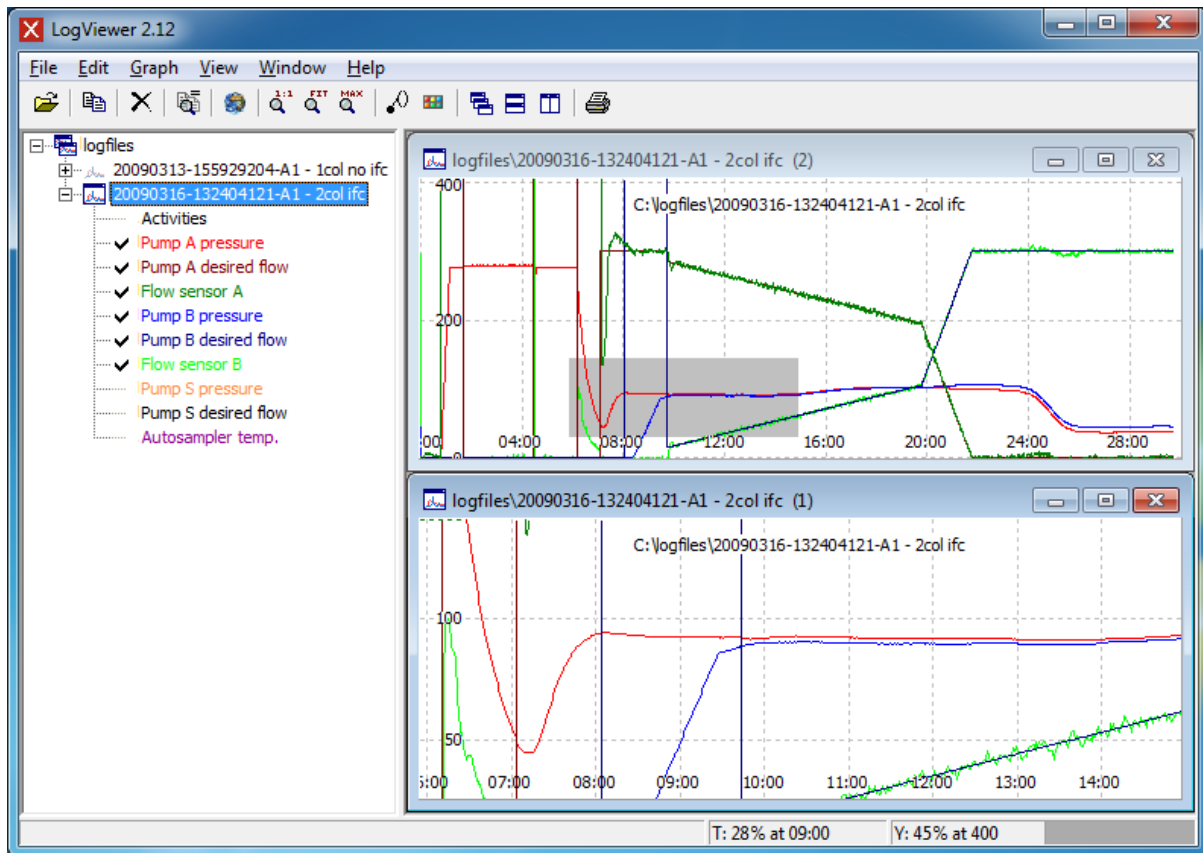
Menu item 'Graph->Apply Coordinates' can be used to apply coordinate labels on the graphs. Simply click on the graphs and a label will be placed near the closest graph at selected time. Place the cursor above to place a label above the line and place it below if the label should be below the graph. Note that these labels also can be placed onto graphs when left-clicking while Shift key is pressed.

These coordinates can also be given a label. Simply click a second time on the same coordinate and an edit box will show. Enter a small text message. A text label will be shown together with the coordinate label.

Right click to remove the last placed coordinate label.

5 Working with more graph windows

It is possible to have many graph windows open at the same time and organize the windows like any other MDI application with the Window menu item. 'Close All' windows menu item has been added.

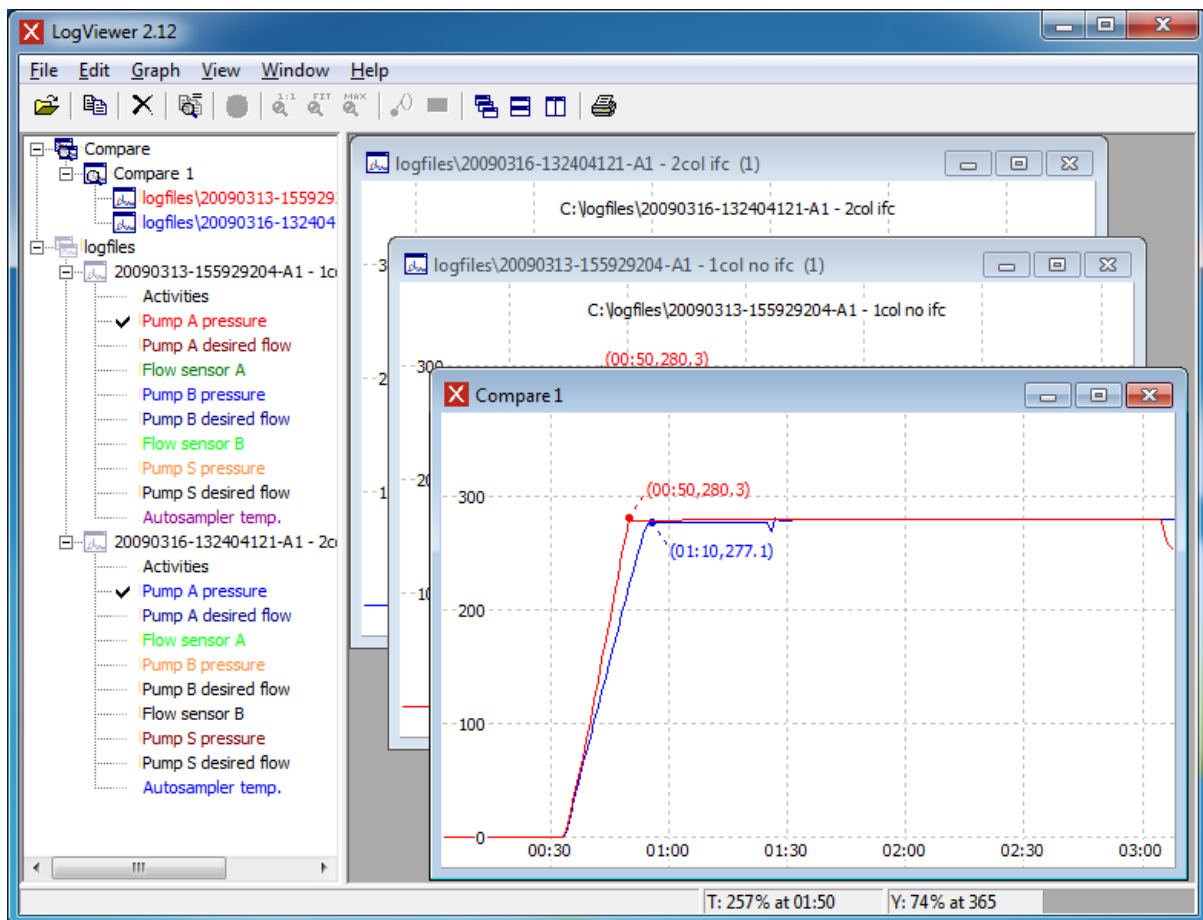


Holding down Ctrl-key while moving a graph in one window will also move the graphs in the other windows.

It is also possible to have two windows of the same graphs open at the same time. Simply hold down Ctrl-key while clicking on a graph node in the tree. The second window can be used as an overview of the first window and a gray rectangle will be shown.

6 Comparing Graphs

Open two or more graphs and it is possible to compare them. A compare window will show the open graphs in one and the same window.



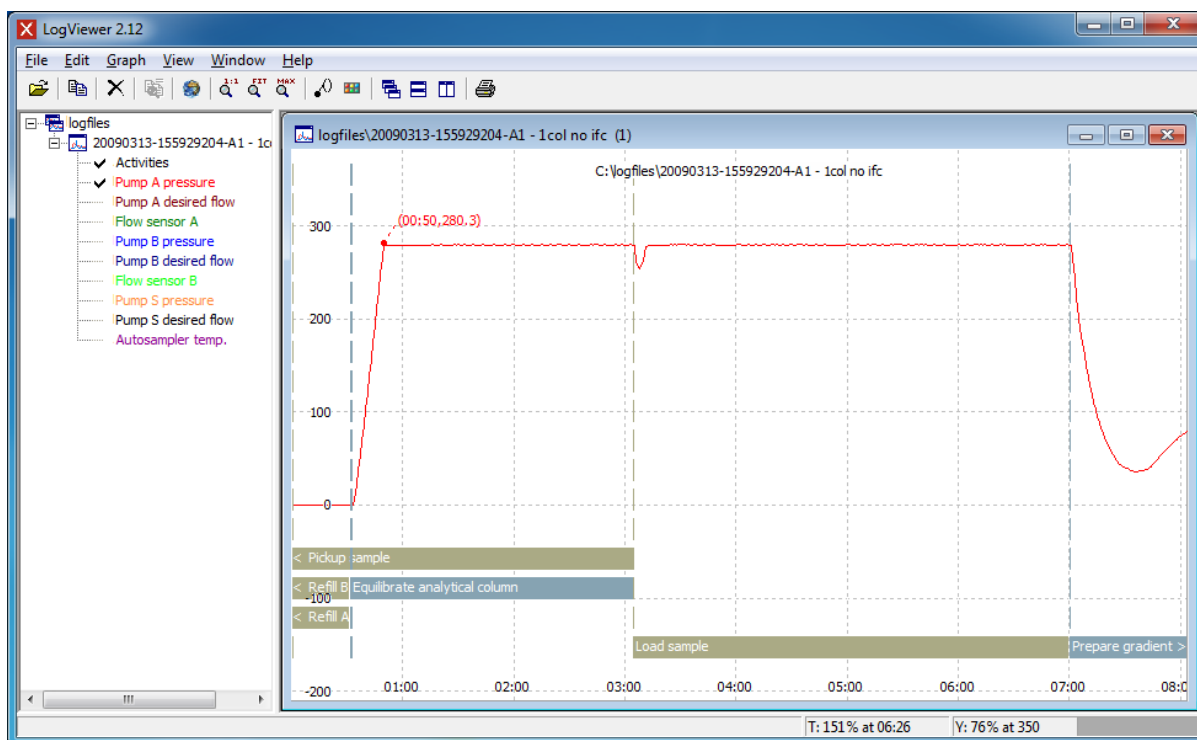
Simply open the graphs to compare and select the menu item called 'Graph->Compare' or press Ctrl+O on the keyboard.

Now, when a graph is moved, it is also moved in the Compare Window. When moving graphs in the Compare window then all graphs will be moved together. It is also possible to select each graph in the compare window by selecting the graph node in the tree to the left (The blue or red node under the 'Compare 1' node). Then only the selected graph will move.

Please note: If 'Alt' key is pressed while moving then only the time axis will move! Also note that it is possible to set each graph windows zoom levels by selecting the graph window and double-clicking the zoom panels in the status bar!

7 The Activities Graph

Checking the 'Activities' node in the Tree will show when the each method activity that happened in the sample run.



A '<' in front of the activity name means that the activity starts before the time shown in the window.

A '>' after the activity name means that the activity ends after the time shown in the window.

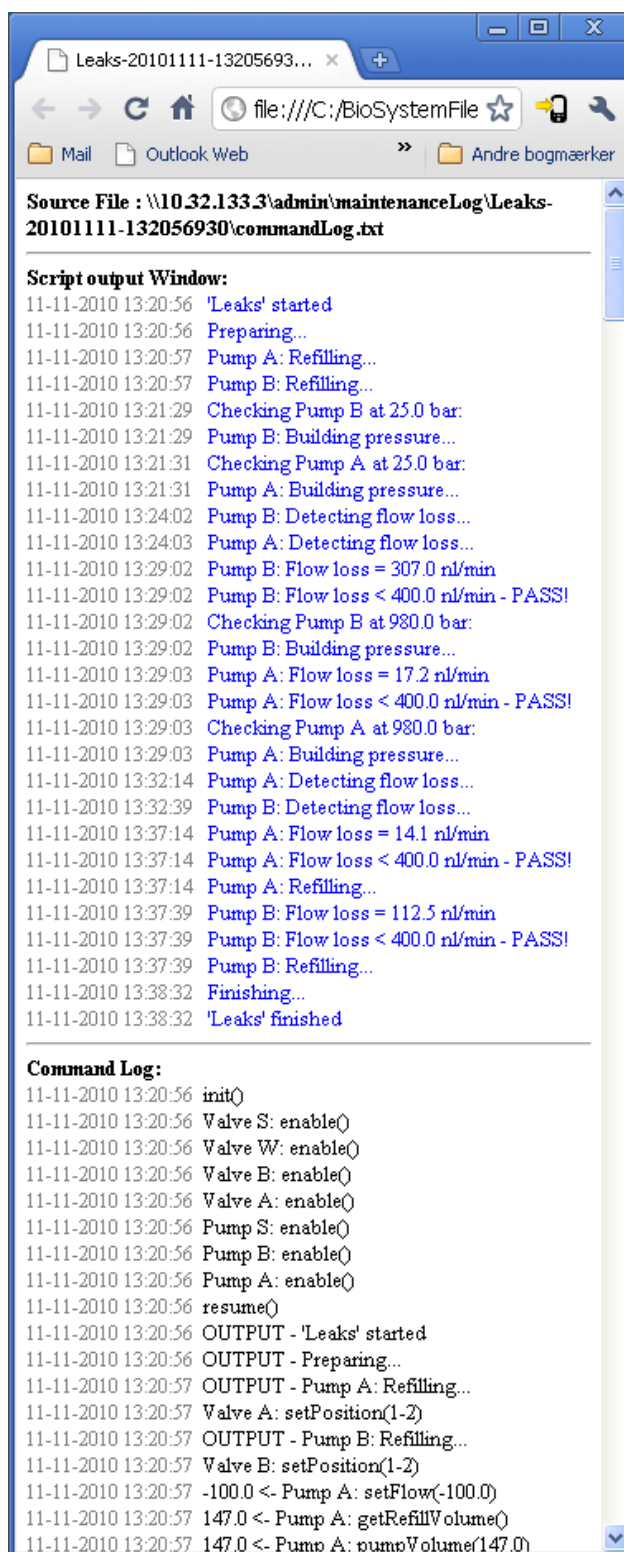
8 Showing the Command Log

Open a graph and select the menu item called 'View->Command Log' to view the script output information.

A web browser window will open and show the content with keyword highlighted.

Words like: FAIL will be colored in red.

The target pressure will also be shown at the beginning of the file.



9 Showing the Method Parameters

Open a graph and select the menu item called 'View->Method Parameters' to view the batch and method parameters used for these graphs.

If no data is available then the message 'No XML data found for Method!' will be shown.

The XML file requires a XSL file to show the data.

If the XSL file is not found then the menu item 'Graph->View Method Parameters' is ghosted!

If that is the case then the 'easynlc-batch.xsl' file is missing from the application folder.

A web browser window will show the method parameters used.

The screenshot shows a web browser window with the title 'Proxeon EASY-nLC method - Proxeon st...'. The address bar shows 'C:\BioSystemFiles\Parl'. The browser has a menu bar (File, Edit, View, Favorites, Tools, Help) and a toolbar with buttons for back, forward, home, and search. The main content area displays the following parameters:

Sample pickup

Volume	10.0 ul
Flow	20.0 ul/min

Sample loading

Volume	20.0 ul
Flow	5.0 ul/min
Max pressure	280.0 Bar

Gradient

Time	Duration	Flow	%B
0	0	300.0	5.0
0	600	300.0	35.0
600	120	300.0	100.0
720	480	300.0	100.0

Pre-column equilibration

Volume	40.0 ul
Flow	Not set ul/min
Max Pressure	280.0 Bar

Analytical column equilibration

Volume	3.0 ul
Flow	Not set ul/min
Max Pressure	280.0 Bar

Autosampler wash

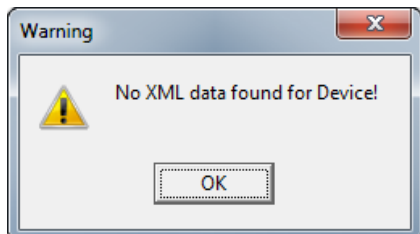
Flush volume	100.0 ul
Custom wash	false

At the bottom, there is a table with headers 'Source', 'Volume', and 'Cycles', and a status bar showing 'My Computer' and '90%'.

10 Showing the Device configuration

Select View->Device configuration... to view the configuration of all the devices on the Easy-nLC.

This information requires an xml file to be located along with the log files. If that is not the case then an error message like this will show:



And when there is an xml file to be used then the result window will look like this:

A screenshot of a web browser window showing the "EASY-nLC Device Configuration for LC-009805". The browser address bar shows "C:\Projects\LC100\Parts\Comr". The page has a blue header with the title "EASY-nLC Device Configuration for LC-009805". Below the header, there are two main sections: "Cooled Autosampler (ASC) [Autosampler]" and "EASY-nLC™ [HPLC]". Each section contains a table of properties and counters.

Cooled Autosampler (ASC) [Autosampler]	
Manufacturer:	Proxeon Biosystems A/S
Driver-info:	1.0.0
Firmware-info:	devType:7; fwVersion:36; A-001227 / devType:8; fwVersion:7; T-001322
Physical-id:	A-001227
Properties	
cooler-temperature	7.0
cooler.address	50
manipulator.address	40
needle-volume	10.25
rack.positions	0:6x8x1,1:1x6x1

EASY-nLC™ [HPLC]	
Manufacturer:	Proxeon Biosystems A/S
Driver-info:	3.1.2.1
Firmware-info:	03-13-2012 14:30
Physical-id:	LC-009805
Properties	
editor-max-pressure	980
idlebleed-flow	0
idlebleed-mix	50
load-speed-protection	false
loop-volume	20.0
no-intelliflow	false
no-precolum	false
Counters	
samplesStarted	1427.0
samplesCompleted	1278.0
precolumSamples	187.0
anacolumSamples	1278.0

11 Changing line colors

To change the color of a graph select the Graph->Change Line Color.

Now click on the line which color should be changed. A color picker dialog will be shown and there will be an arrow next to the line name in the tree view. Select the color and click 'OK' to change to that color.

To use these new colors as default select the menu item called 'Graph->Set As Default Profile'. New graphs will now use these colors when loaded.

12 Select graphs to view

To show the other graphs left click the graph name in the tree view and a checkmark (✓) will become visible next to the graph name. Right click and only that graph will be shown.

To set these as selected by default, select the menu item called 'Graph->Set As Default Profile'. The graphs will now be visible by default when loaded.