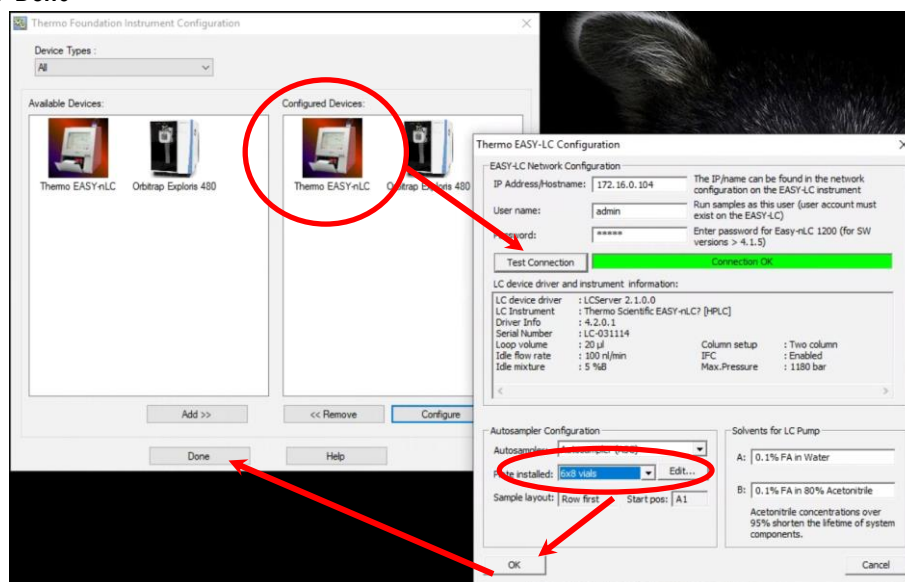


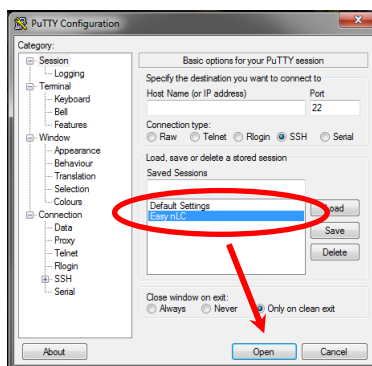
Reconnecting and starting up TightVNC viewer (e.g. after a PC reboot)

- Open instrument configuration (should be pinned to the start menu)
- Click on **"ThermoEASY-nLC"** and then click on **"Configure"**
- The **"Thermo EASY-LC Configuration"** window should open,
- Note the IP Address (172.16.0.104), user name (admin) and password (admin) should be filled in
- Click on **"Test Connection"** the bar to the right should change color to green and display **"Connection OK"**
- Under Autosampler Configuration select the correct **"Plate installed"**: typically we use **6x8 vials**
- Click **"OK"** and then **"Done"**



Start virtual display

- Double click on **PuTTY** (located on the desktop), select **"EASY nLC"** and hit **"Open"**



- The PuTTY window will open up prompting to login and then password:
Login as: **hplc**
hplc@172.16.0.104's password: **hplchplc**
- (Note the default password on older EASYnLC running SW4.1 was hplc, with SW4.2 the password is the Master Key, unless you changed it. At UWPR we changed all of them to hplchplc.)

- Hit the up arrow to reload the last command or type: `x11vnc -q -display :0`

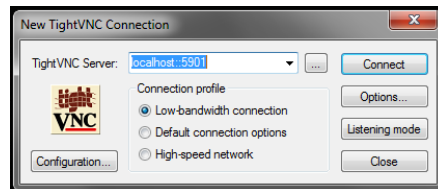
```

hplc@LC-030757:~/home/hplc
login as: hplc
hplc@172.16.0.104's password:

The programs included with the Debian GNU/Linux system are free software;
the exact distribution terms for each program are described in the
individual files in /usr/share/doc/*/copyright.

Debian GNU/Linux comes with ABSOLUTELY NO WARRANTY, to the extent
permitted by applicable law.
Last login: Fri Oct 19 16:08:03 2018 from 172.16.0.101
hplc@LC-030757:~$ x11vnc -q -display :0
#####
#####
#####
# ** WARNING ** WARNING ** WARNING ** WARNING ** #
#                                                     #
#   YOU ARE RUNNING X11VNC WITHOUT A PASSWORD!!   #
#                                                     #
# This means anyone with network access to this computer #
# may be able to view and control your desktop.      #
#                                                     #
# >>> If you did not mean to do this Press CTRL-C now!! <<< #
#                                                     #
#####
#####
#####
The VNC desktop is:   LC-030757:0
PORT=5900
  
```

- If you don't see the above window, try the alternate command: `x11vnc -env FD_XDM=1 -auth guess`
- For our EASY7/LC-031114 we use that command, all the others work with the original one)
- You can minimize the Putty window, but don't close it.
- Now double click on the TightVNC icon (located on the desktop)
- The TightVNC Server should be: `localhost::5901`
- And hit **“Connect”**



- Now the virtual display should open up and allow you to control the EASynLC from the PC.

