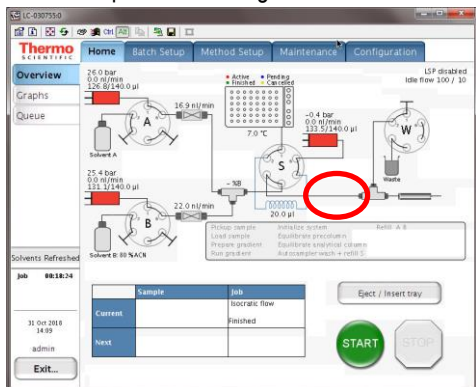


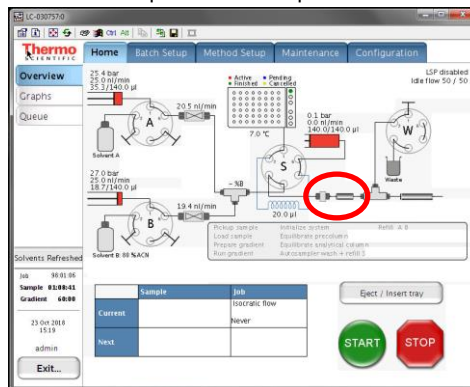
How to switch between trapping and no-trapping mode

- You can look at the home page on the EASY to see which mode it currently is in

Without trap shows a straight line

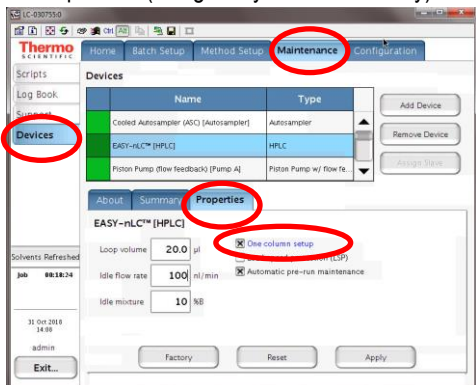


With trap shows the trap column

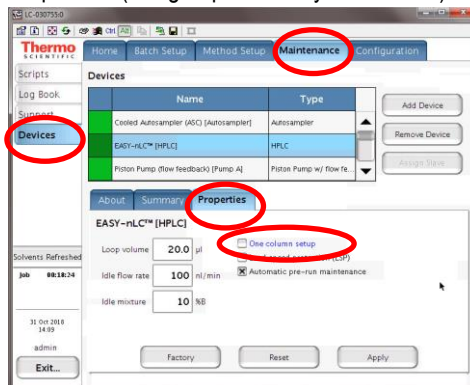


- To switch the trapping mode click on the Maintenance/Devices/EASY-nLC [HPLC]/Properties
- To select no-trap mode check the box next to “One column setup”
- To select trapping mode uncheck the next to “One column setup”
- Hit “Apply” and accept the popup confirmation window

No-trap mode (using analytical column only)



Trap mode (using trap and analytical column)



Make sure your plumbing is setup correctly

- In trap mode put a trap column in front of the analytical column
- In no-trap mode replace the trap column with an empty fused silica
- That's it.

Now make sure the sample loading in the method is setup correctly

- For **no-trap mode** we recommend to load at lower flowrates e.g. 0.3 µl/min, or set the max pressure instead e.g. 150-200 bar
- the loading volume should be: 2 x sample volume + 2µl
- But always use a minimum of 6 µl (1-2 µl of sample volume)
- e.g. if you load 4 µl of sample: 2 x 4 µl + 2 µl = 10 µl

The image shows two side-by-side screenshots of the EASY nLC software interface. Both screenshots are for the 'Sample pickup and loading' configuration page, with tabs for 'Gradient', 'Pre-column and Analytical column', and 'Autosampler'.
 Left screenshot (no-trap mode):
 - Sample pickup: Volume: 4 µl (Max. is "loop size - 2 µl"), Flow: 20 µl / min.
 - Sample loading: Volume: 10 µl, Flow: 0.3 µl / min, Max. pressure: Bar.
 - Solvents: A: water, B: acetonitrile 80%.
 - Buttons: < Back, Next >
 Right screenshot (no-trap mode):
 - Sample pickup: Volume: 4 µl (Max. is "loop size - 2 µl"), Flow: 20 µl / min.
 - Sample loading: Volume: 10 µl, Flow: µl / min, Max. pressure: 200 Bar.
 - Solvents: A: water, B: acetonitrile 80%.
 - Buttons: < Back, Next >

- For **trap mode** you can load at higher flowrates e.g. 2.5 µl, or set the max pressure instead e.g. 150-200 bar
- the loading volume should be: 2 x sample volume + 2µl
- But always use a minimum of 6 µl (1-2 µl of sample volume)
- e.g. if you load 4 µl of sample: 2 x 4 µl + 2 µl = 10 µl

The image shows two side-by-side screenshots of the EASY nLC software interface. Both screenshots are for the 'Sample pickup and loading' configuration page, with tabs for 'Gradient', 'Pre-column and Analytical column', and 'Autosampler'.
 Left screenshot (trap mode):
 - Sample pickup: Volume: 1 µl (Max. is "loop size - 2 µl"), Flow: 20 µl / min.
 - Sample loading: Volume: 6 µl, Flow: 2.50 µl / min, Max. pressure: Bar.
 - Solvents: A: water, B: acetonitrile 80%.
 - Buttons: < Back, Next >
 Right screenshot (trap mode):
 - Sample pickup: Volume: 4 µl (Max. is "loop size - 2 µl"), Flow: 20 µl / min.
 - Sample loading: Volume: 10 µl, Flow: 2.50 µl / min, Max. pressure: Bar.
 - Solvents: A: water, B: acetonitrile 80%.
 - Buttons: < Back, Next >