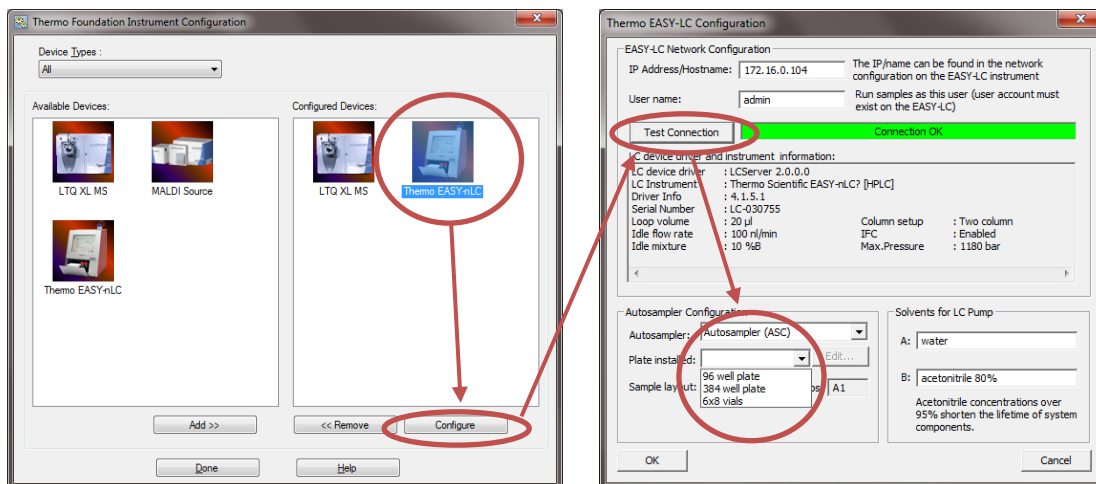


Changing the plate configuration

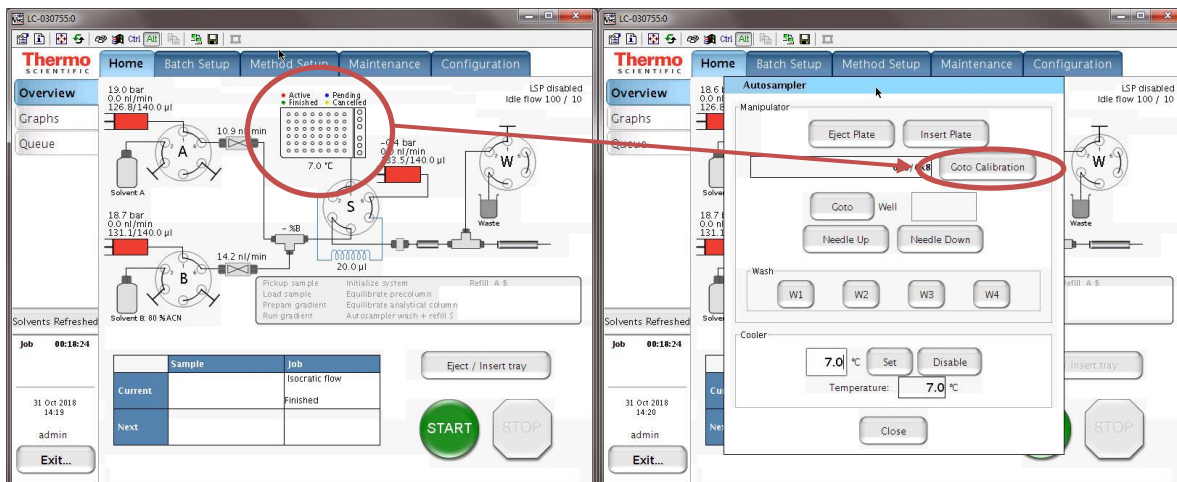
At UWPR we use two plate types 6x8 and 96well, to switch between them follow the steps below

- Close Xcalibur, methods, Qual browser etc.
- You can leave the virtual display and Tune window open
- Open instrument configuration (should be pinned to the start menu)
- Select the EASYnLC and hit configure
- Click on “Test configuration” wait for the “connection OK” turn green
- Under Autosampler Configuration, go to the plate installed and select the plate format you want to use
- Note our systems are only calibrated for 6x8 vials and 96 well plate
- You can click on Edit to see the layout or change the row/number layout if you wish
- Hit “OK” and then “Done” to close the instrument configuration window

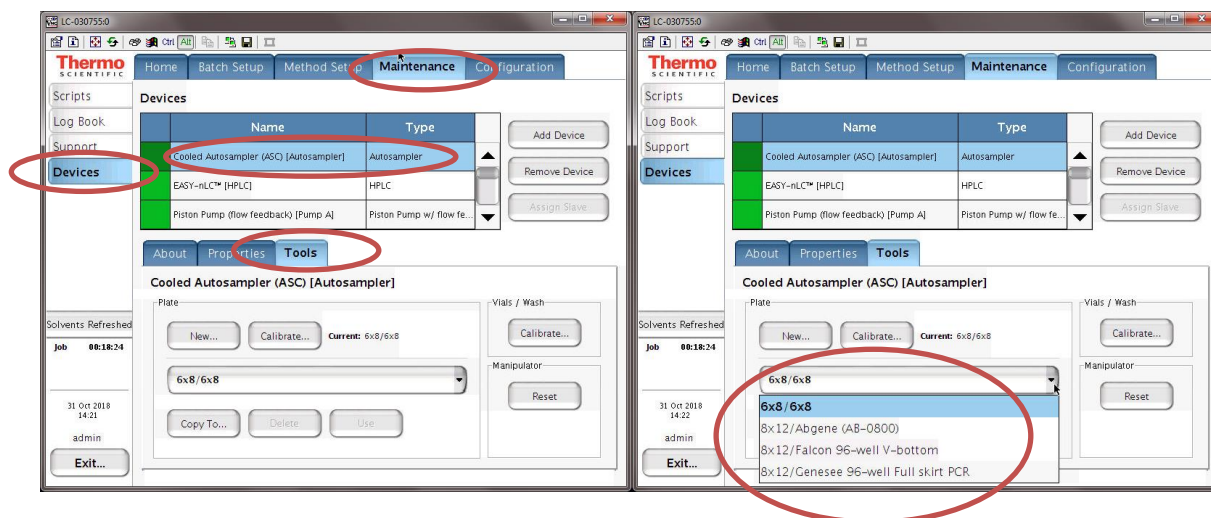


Now you have to change the plate on the HPLC itself:

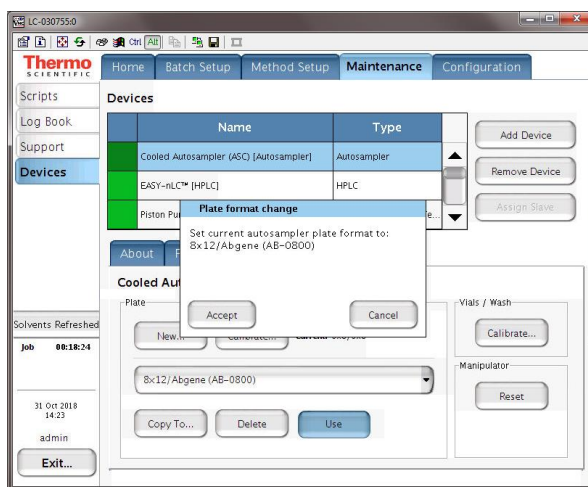
- On the EASYnLC home screen click on the plate
- Click on Goto Calibration



- Alternatively you can go to Maintenance/Devices/Cooled Autosampler/Tools



- Select the plate you want to use from the pull down menu
- Hit "Use" and acknowledge the pop up



- Now re-open Xcalibur and you should be able to select the sample positions that correspond to your plate
- 6x8: A1-A8, B1-B8, ... F1-F8
- 8x12: A1-A12, B1-B12, H1-H12
- Note the vial position for the 6 vials on the right side is 1-V1 through 1-V6